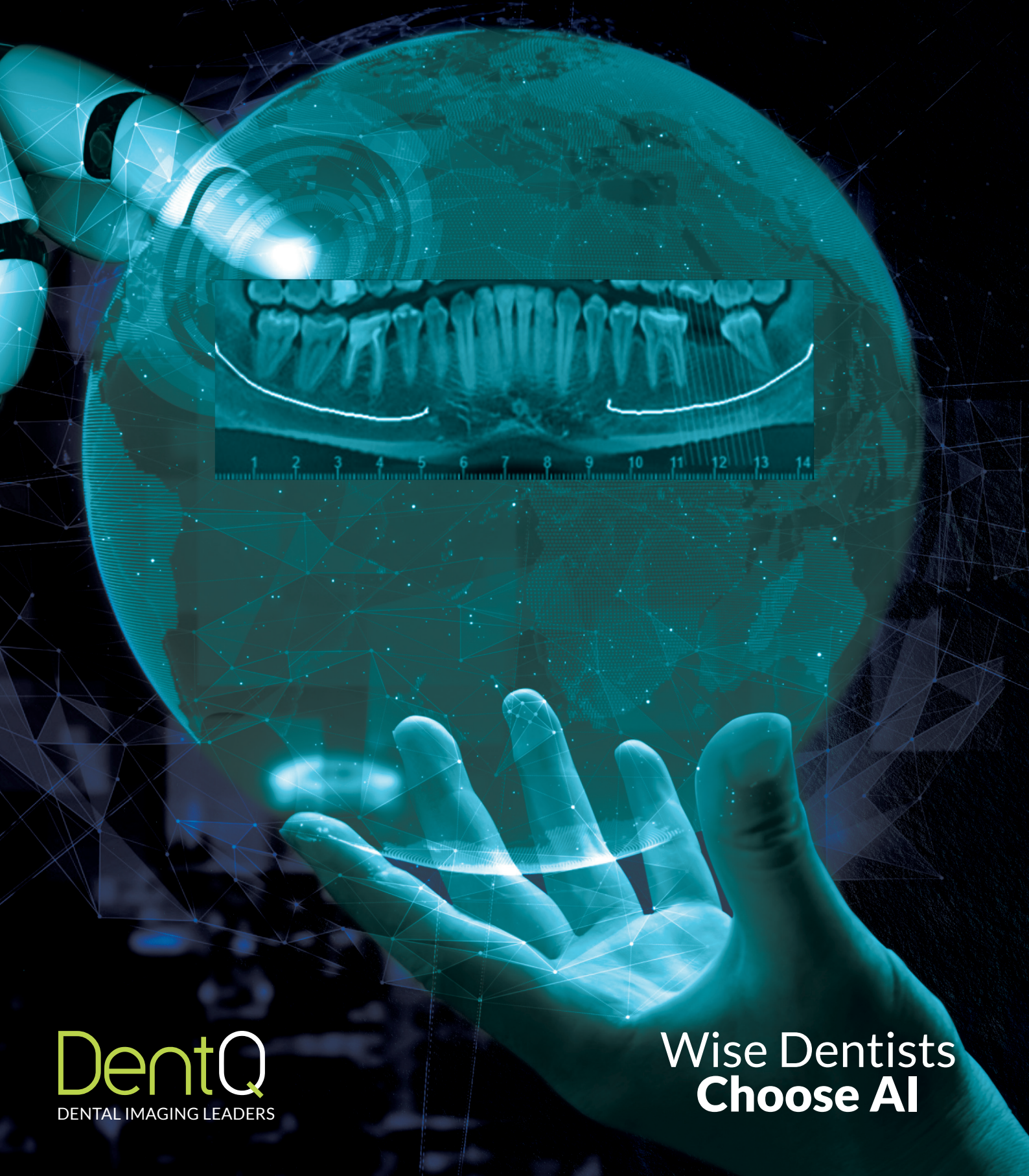


AI + Human Implant Study



DentQ
DENTAL IMAGING LEADERS

Wise Dentists
Choose AI

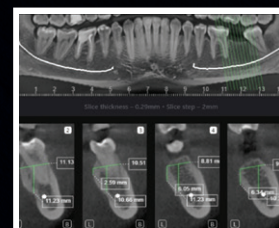
AI + Human Implant Study



Description

A combined manual and AI Implant Study, based on CBCT scan:

- Panorama with sinuses and Inferior Alveolar Canal marking
- Measurements of the implant placement site



Features

General Features:

- Applied on CBCT scans
- Precise distance measurements to support proper implant placement
- Alveolar ridge measurements
- Interactive report for the dentist, for adjustment of measurements
- Planning tools for implant surgery

Clinical Information

- Bone thickness
- Ridge height
- Location of Inferior Alveolar Canal
- Location of Maxillary sinuses

Benefits

- Informative – provides the data needed for successful implant surgeries
- Saves time and effort - ready-made measurements to plan implant placements
- Flexible - interactive report and useful planning tools



Join us at:   
 www.DentQ.com  info@DentQ.com

DentQ
DENTAL IMAGING LEADERS